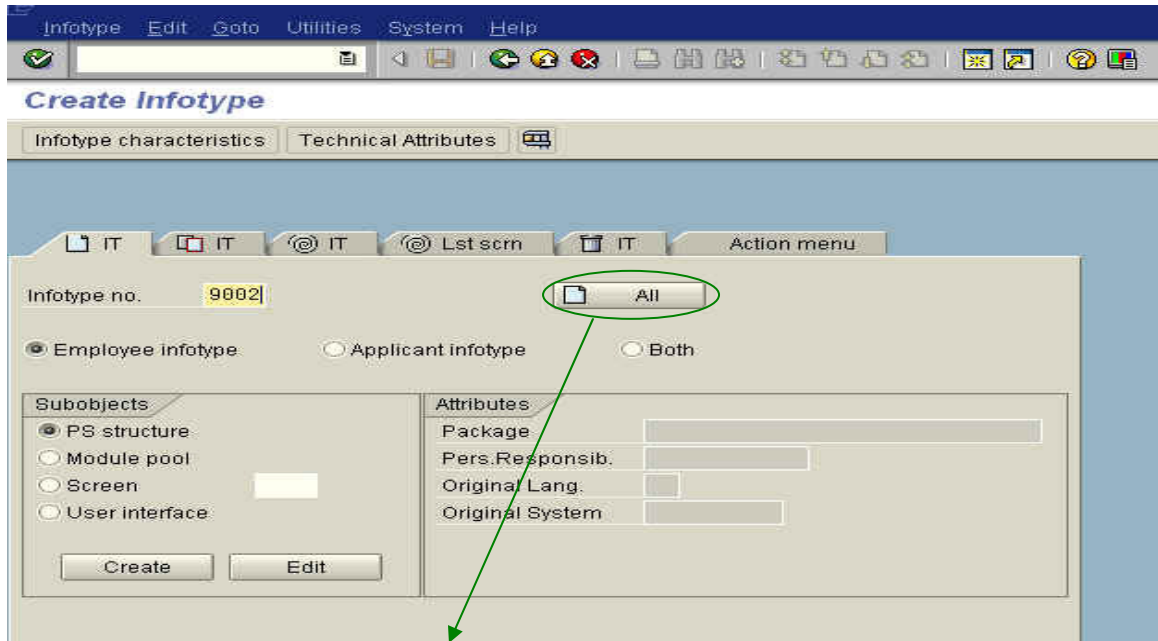


Infotype creation

Custom Infotype can be created by following these steps:

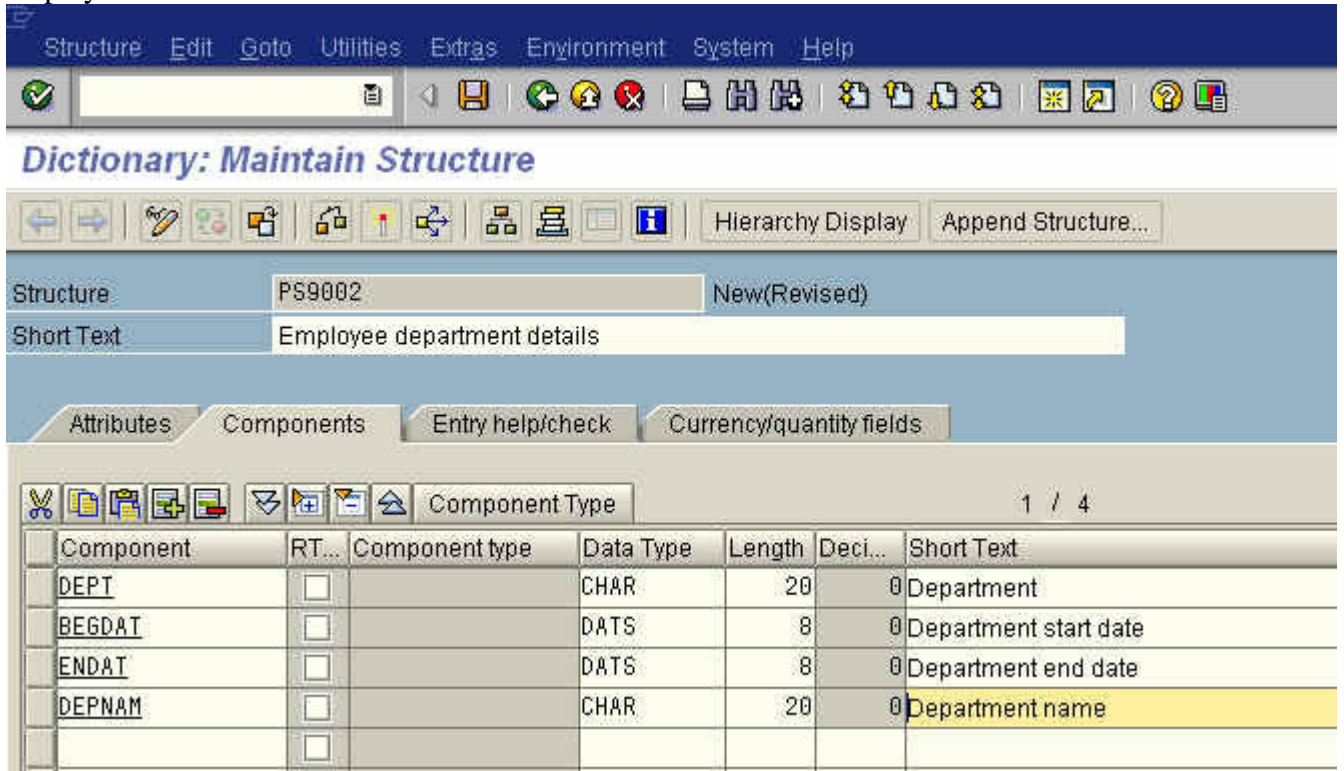
1. Go to transaction PM01.



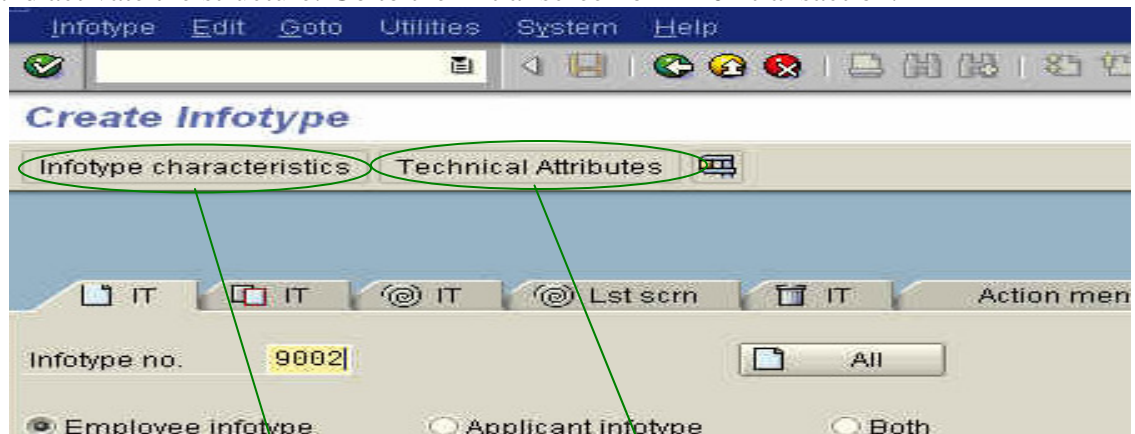
All Push button

2. Provide the Infotype number. The number should be from 9000 to 9999. Avoid providing the Infotype number that already exists.
3. See to it that the Employee Infotype and PS structure radio buttons have been selected.

- Select the 'All' Push button as shown in above figure. The following below shown screen is displayed.



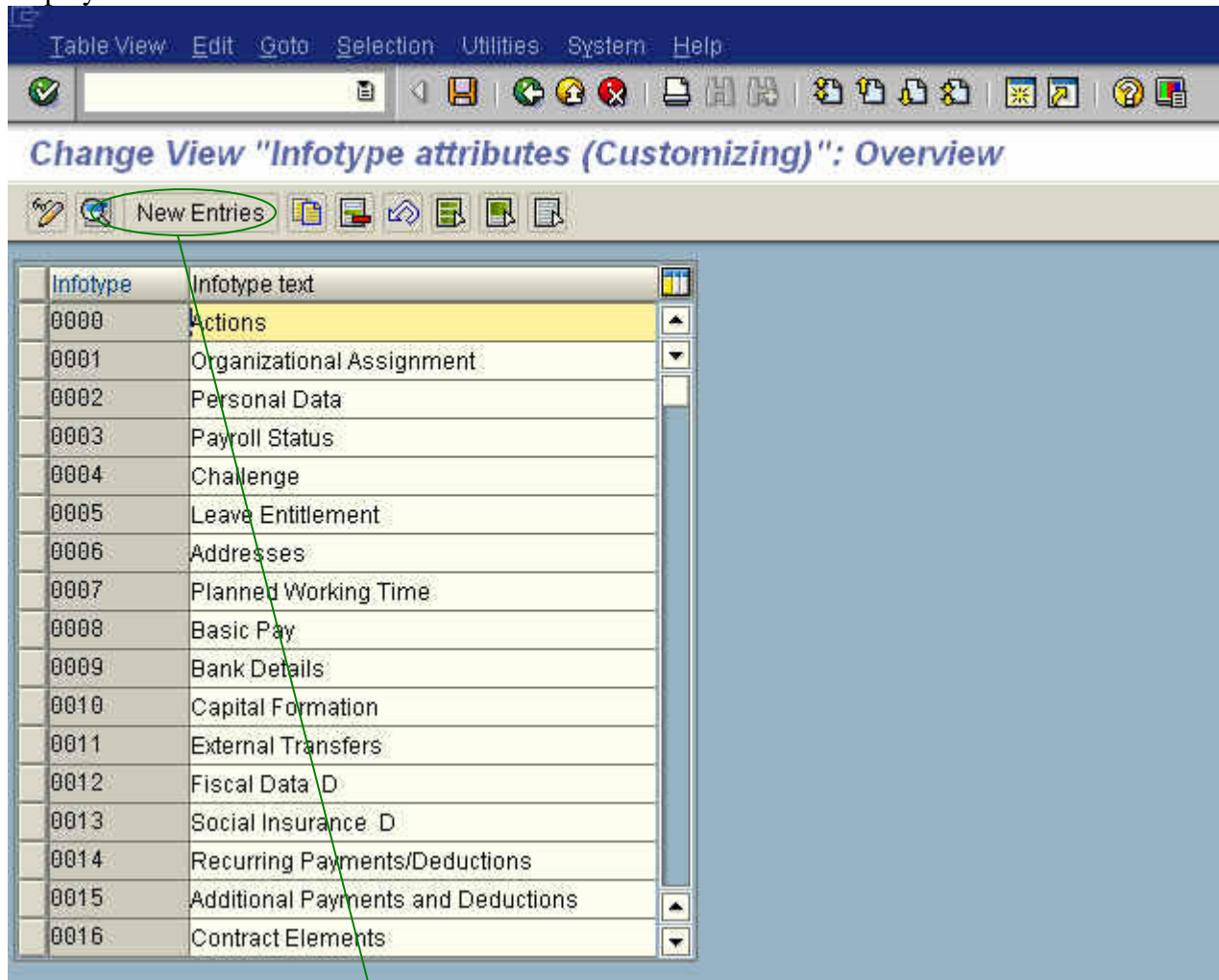
- Maintain the structure (Provide fields) which will be included in our current custom Infotype. The PAKEY/PBKEY and PSHD1 structures are not required to be provided while creating the custom Infotype. They are included in the custom Infotype by default.
- Save and activate the structure. Go to the initial screen of PM01 transaction.



Infotype characteristics
Push button

Technical Attributes
Push button

7. Select the 'Infotype characteristics' push button shown in the above figure. The below screen is displayed.



New Entries Push button

- Select the 'New Entries' push button shown in the above figure. The below shown screen is displayed.

The screenshot displays the 'New Entries: Details of Added Entries' screen in SAP. The interface includes a menu bar (Table View, Edit, Goto, Selection, Utilities, System, Help) and a toolbar with various icons. The main content area is organized into several sections:

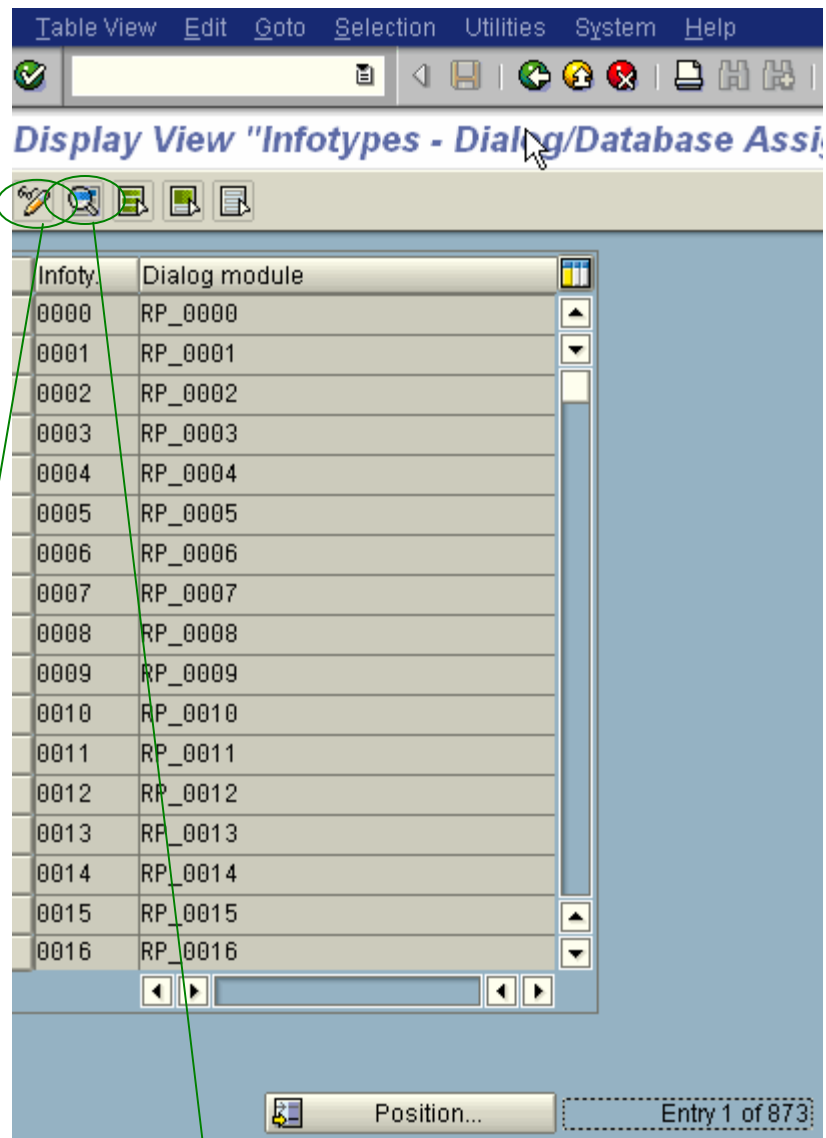
- Infotype:** 9002 Employee department details
- General attributes:**
 - Time constraint: 2
 - Time cnstr.tab.: []
 - Maint. aft. leave: []
 - Access auth.:
 - Subtype obligatory:
 - Subtype table: []
 - Subty. text tab.: []
 - Subtype field: []
 - Accntng/log. data:
 - Text allowed:
 - Copy infotype:
 - Propose Infotype:
- Display and selection:**
 - Select w/ start: []
 - Select w/ end: []
 - Select w/o date: []
 - Create w/o strt: []
 - Create w/o end: []
 - List time per.:
 - Sort sequence: []
 - Screen header: []
 - Choose data:
- Retroactive accounting trigger:**
 - Before ERA date:
 - Entry of RA limit time:
 - Retr. acct. payr.: []
 - Retr. acct. PDC: []
 - Past entry all.: []
 - No org. assign.: []
- Technical data:**
 - Single screen: 2000
 - List screen: 3000
 - List entry:
 - Dialog module: RP_9002
 - Structure: P9002
 - Database table: PA9002
- Applicant infotypes:**
 - Applicant DBTab: []

- Provide the Current custom Infotype number (9002) and description for the Infotype. Also provide the Time constraint based on the requirement, 2000 as the single screen and 3000 as the list screen.
- The 'Subtype Obligatory' check box needs to be selected if we intend to make the subtype as mandatory field. This step is useful when we come through the step 11 (Subtype maintenance). This step can be skipped if we don't want the subtype for an Infotype.
- Save the Infotype details and go back to the initial screen of PM01 transaction.

Additional steps

If a subtype needs to be maintained for the Infotype then some additional steps also needs to be performed before providing Infotype characteristics (step number 7).

- Select the Technical attributes (Figure shown in step 6) from the initial screen of PM01 transaction .The below shown figure is displayed.



Display/Change button

Details

13. Select the change button on application tool bar. The dialog module in the above screen then becomes editable.
14. Select the Infotype 9002 and select the details button as shown in the above figure (In change mode). The below shown figure is displayed.

Table View Edit Goto Selection Utilities System Help

Change View "Infotypes - Dialog/Database Assignmen

New Entries

Infotype 9002

General Fields for Dialog Control

Dialog module	RP_9002
Structure	P9002
Database table	PA9002
Module pool	MP900200
IDOC segment	
2nd IDOC segmnt	
3rd IDOC Seg.	

Infotype of Personnel Administration Personnel Planning

Infotype Versions

Personnel Administration

Applicant DBTab	
Subtype field	DEPT
Subtype table	T591A
Subty.text tab.	T591S
Time cnstr.tab.	
Prim./Secon.IT	I Infotype
Period/key date	I Interval
Import period	

List entry

Evaluation infotype

Country-spec. subtype

Simulated infotype

15. Provide the Subtype field of the Infotype, Subtype table as T591A and Subty.text table as T591S.
16. Save and go back to the initial PM01 screen.
17. The subtypes for an Infotype can be entered via the maintenance view V_T591A.
18. Continue with step 7 as required.